



TENSOR TUBULAR HORQUILLA-TERMINAL RÁPIDO ACERO INOX.

Artículo	Rosca Ø mm	Cable Ø mm	L-1 mm	L-2 mm	A mm
N131506	6	3	165	220	6
N131508	8	4	185	250	8
N131510	10	5	220	295	10
N131512	12	6	290	390	12
N131514	14	7	300	410	14
N131516	16	8	350	500	16

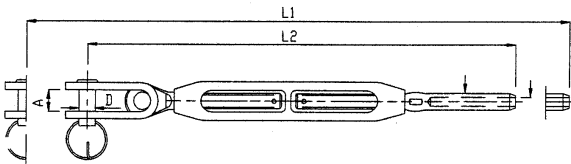


TENSOR OJO Y GANCHO DE ACERO INOX.

Artículo	Rosca Ø	Longitud cerrado-abierto mm
V131905	M-5	110-170
V131906	M-6	140-220
V131908	M-8	180-280
V131910	M-10	230-360



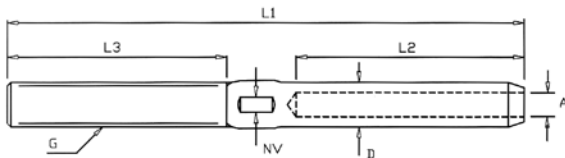
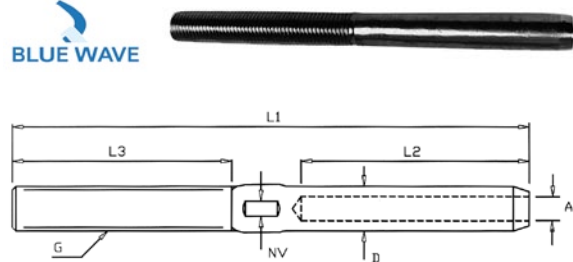
TENSOR TUBULAR TOGGLE-TERMINAL ACERO INOX.



Artículo	Rosca Ø mm	Cable mm	L-1 mm	L-2 mm	A mm	D mm
N131603	1/4"	3	255	193	8	6.35
N131604	1/4"	4	265	203	8	6.35
N131605	5/16"	5	310	234	10	8
N131606	3/8"	6	364	280	12	9.5
N131607	1/2"	7	433	327	18	12.7
N131608	1/2"	8	448	342	18	12.7
N131610	5/8"	10	545	413	20	16



TERMINAL DE ROSCA ACERO INOX.



Rosca izquierda	Rosca derecha	Rosca	Cable Ø mm	L1 mm	L2 mm	L3 mm
	N132102	M5	2.5	87	32	42
N132103I	N132103	M6	3	100	38	48
N132104I	N132104	M8	4	117	45	57
	N1321046	M6	4	110	45	48
N132105I	N132105	M10	5	130	51	63
	N1321058	M8	5	125	51	57
N132106I	N132106	M12	6	162	64	80
	N1321061	M10	6	145	64	63
N132107I	N132107	M14	7	180	70	89
	N1321071	M12	7	170	70	80
N132108I	N132108	M16	8	203	83	100
	N1321081	M14	8	194	83	89
N132110I	N132110	M20	10	230	89	120
	N1321101	M16	10	210	89	100
	N132112	M20	12	249	105	120
	N132114	M22	14	308	140	140